

HYDROBOX



PRODUCT MODEL	PW-25-9	PW-25-12
3-Way Valve	DN25/ACOL SEV2325B	DN25/ACOL SEV2325B
Filter	ACOL/DN25	ACOL/DN25
Electric Heater	3kW/220V	3kW/220V
DC Inverter Water Pump	Shimge/APM25-9-130	Shimge/APF25-12-130
Max water head(m)	9	12
Expansion Tank(L)	5L	5L
Diameter of pipe (mm)	DN25	DN25
Safety valve(MPa)	0.3	0.3
Leakage Switch(A)	32A	32A
Cabinet	Galvanized powder coated steel	Galvanized powder coated steel
Package	Plywood/Carton	Plywood/Carton
Power Supply(V)	220-240V/380-415V	220-240V/380-415V
Net Weight(kg)	30	30
Gross Weight(kg)	32	32
Net Dimension(mm)	700*500*220	700*500*220
Packing Dimension(mm)	760*540*260	760*540*260
Applicable Models	PW030-DKZLRS-A/ PW040-DKZLRS-A/ Expansion Models	PW050-DKZLRS-A/PW060-DKZLRS-A/ Expansion Models

Power World Machinery Equipment Co.,Ltd.

Headquarters Add.: No.24, Fourth Industrial Zone, Houting Street, Shajing Town,
Baoan District, Shenzhen, China.

Krasta iela 103, Rīga, Latvija.

Tel:+371 27809258

E-mail: info@pwhp.eu

Website: www.pwhp.eu



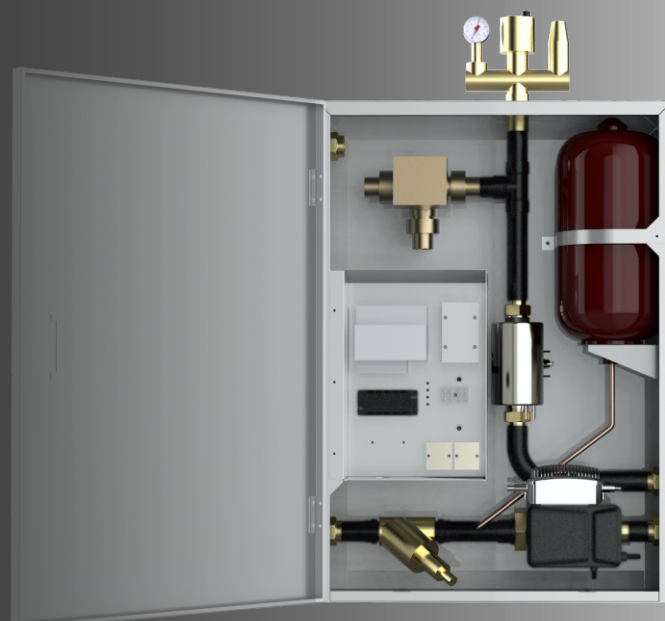
HEAT PUMP MANUFACTURER THE POWER TO PROMOTE WORLD DEVELOPMENT!

HYDROBOX

Matching with the heat pump, making the installation more convenient!

- Easy Installation &Maintenance
- Component Integration Design
- Smart Home Control
- Avaiable for Floorheating, Radiator Fan Coil and Water Heating



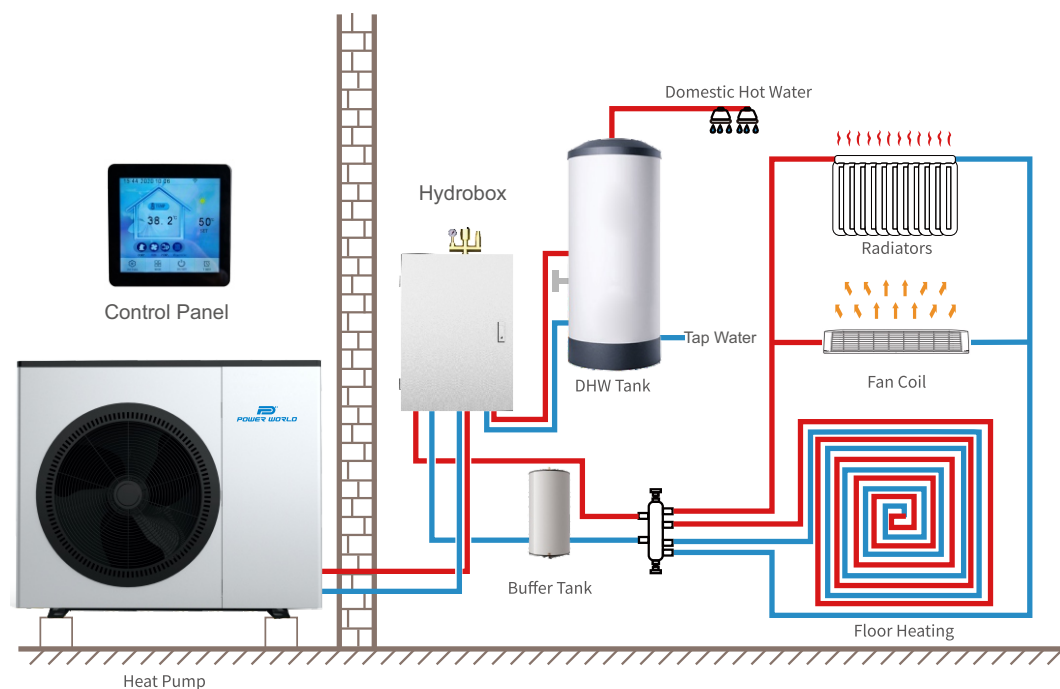


Power World's Hydrobox makes heat pump installation and maintenance easier. Hydrobox integrates water pumps, small expansion tank, valves, safety components, electric heater, and other components. When installing the heat pump system, the installer can connect the heat pump directly to the Hydrobox, which is very simple and convenient, even if you do not have a lot of experience, you can follow the instructions to complete the installation.



■ Component Integration Design

The Hydrobox integrates water pumps, valves, safety components, electric heater and other components. Compared with the traditional complex and cumbersome piping system layout, its installation area is small, about 0.4m²; it saves installation time and costs; it can reduce human factors and environmental factor damage, and maintenance is simple.



■ Easy Maintenance

Hinged door design, with a door lock, easy to open the hinged door for maintenance and inspection repairs.

■ Electric Heater

Use pipeline electric heating, connect water and electricity to directly produce hot water. Cylindrical pipeline structure, 360° comprehensive heating, long service life, high temperature, high-pressure resistance, salt and alkali resistance, not easy to deform.

■ Expansion Tank

Using the expansion tank of the well-known Italian brand AQUASYSTEM. The new airbag structure realizes the separation of water and tank, which not only reduces the pollution of water quality but also slows down the corrosion of the tank. It adopts a one-time pressing and forming flange structure, and there is no welding point between the flange and the connecting screw. Unlike many domestic expansion tanks, the screw is welded on the flange, which is not only poor in force but also easy to rust.

■ 3-Way Valve

Using internationally renowned brand components. Compared with other 3-way valves, it takes up less space, is more reliable and durable, the working noise is low, and it can work stably in a high-temperature environment.

■ Smart Home Control

The Hydrobox system can communicate with the heat pump unit for smart home control.

■ Filter

Copper Y-strainer with drain valve. The screen area of the filter is larger than other ordinary filters. Set up a drain valve, which can be drained at any time, and the maintenance and operation are convenient and simple.

■ SHIMGE Inverter DC Water Pump

Intelligent variable frequency circulating pump, three-speed speed regulation. A well-known brand in China, using a permanent magnet motor, and intelligent frequency conversion control, the motor stator is completely shielded, and the rotating parts are made of ceramic bearings and ceramic shafts, which are wear-resistant and lubricated by clean water, which can cool the motor and reduce noise. Full pump head operation is not overloaded, and as long as it is used correctly, it is generally free of maintenance.

■ High Strength Metal Casing

The thickness of the sheet metal and the force of the structure are designed by 3D structural software simulation. At the same time, the inside of the unit involves a metal frame to ensure overall robustness and reliability.